

# MAPTUNER X

## DATALOGGER KIT



---

## Quick Start Guide

### Parts included:

- **Wideband AFR Sensor + Module GEN 4**  
Wideband Air Fuel Ratio controller with a Bosch LSU 4.9 wideband oxygen sensor.
- **MegaLogViewer HD License**  
Visualize your data to quickly identify problems or opportunities.
- **Monitoring APP**  
View values in real-time on Maptuner X screen.
- **Datalogger APP**  
Datalogger application required for logging.
- **Dash View**  
Send data to cluster (Only bosch).
  - **Required cabling.**

# Step 1

Download and install latest MyMaptuner PC Program.

<https://maptuner.se/download/Default.aspx>



The screenshot shows the 'Map Tun performance' logo and 'DOWNLOAD CENTER' header. Below, under 'MYMAPTUNER SOFTWARE', it specifies 'Windows 32 bit Operating System'. A table lists software details: File: MyMaptuner\_32bit\_2.3.79\_Setup.exe, Version: 2.3.79, Date: 2017-08-02, Size: 29.8 Mb. A red 'DOWNLOAD' button and a link 'Help me choose 32bit or 64bit' are present. An image of a Maptuner X device is shown. A note at the bottom states: 'For MaptunerX and Maptuner 1 devices. Enables download and installation of new tunes and system diagnostics.'

# Step 2

Open MyMaptuner and login using your login details.

# Step 3

Plug Maptuner X in to your computer and click on “Synchronize” button.

Maptuner X will now go online and download your new applications.



The screenshot shows the 'My Maptuner [Vtech]' application window. The menu bar includes 'Logout...', 'Select tunes...', 'Claim license code...', 'Plot files...', and 'Options'. The main area features a large red and grey 'X' logo. Text on the right reads: 'To update your MapTuner simply connect it and click on 'synchronize!' If you experience any problems during update, Visit WWW.MAPTUNPOWERSPORTS.COM for more information.' A 'Synchronize' button is located at the bottom right.

## Step 4

Follow instructions below for connecting your equipment.

- [01-MT019] HDMI Male connect to Maptuner X.
- HDMI Female connects to your diagnostic cable from vehicle.
- 3.5mm Female connect to PLX module TX output using 3.5mm male/mal cable.
- Connect Red/Black cable from PLX power input to battery on vehicle.
- Connect 02- sensor to 02- sensor input on PLX module.  
**NOTE!** Maptuner X Yamaha Diagnostic Cable is only required if logging Yamaha vehicles.

## Step 5

Follow instructions below to download MegaLogViewer HD.

- Enter website  
<https://www.efianalytics.com/MegaLogViewerHD/>
- Click on “Register MegaLogViewer HD NOW!”
- Fill the required forms and click “Next!”
- Apply your coupon code that can be found on your order confirmation from Maptun Powersports VTECHTUNED.

### Shopping Cart

[Continue Shopping](#)

User(Change): **Viktor Paulsson**  
eMail Address: **VPaulsson@live.com**

Registration and shipping information will be sent to above eMail Address.

Shopping Cart:

Item	Qty.	Price
MegaLogViewer HD ( <a href="#">License Agreement</a> )	1	<del>\$60.95</del> \$39.95 ✖
<b>Total</b>		<b>\$39.95</b>


**Upgrade Offer: TunerStudio.MS & MegaLogViewer.HD.Combo** ~~\$119.95~~ \$89.95 ✖  
Get TunerStudio and The Premium MegaLogViewer HD for only \$30 more!  
Save an additional \$10 over purchasing separately [Upgrade Now!](#)





**Upgrade Offer: USB To Serial Adapter and DB9 Cable Combo** ~~\$32.95~~ \$24.95 ✖  
Buy together and save! The most reliable connection you can have. [Upgrade Now!](#)

Select Payment Method

[Apply Coupon](#)

[Pay By Credit Card](#)

 [PayPal Check out](#)  
The safer, easier way to pay

[Continue Shopping](#)

## Step 6

Connect Maptuner X to ski and click on **Datalogger APP**.

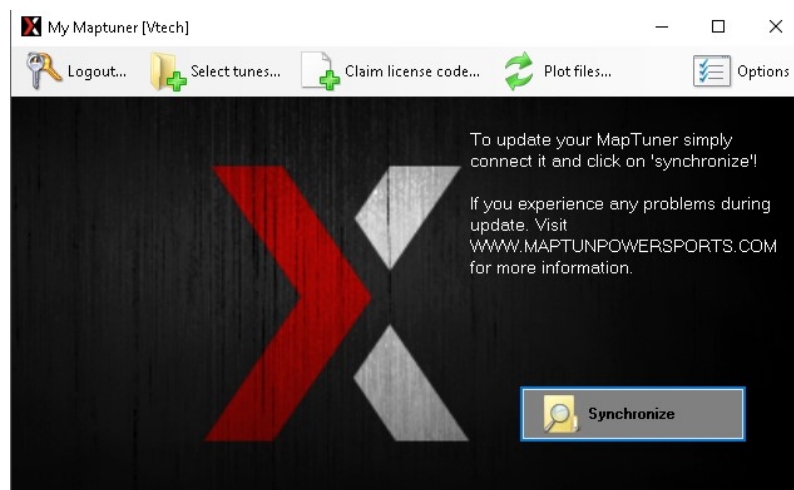
Click on play button to start logging.

Click on stop button to stop logging.

Click on rename to rename log file.

## Step 7

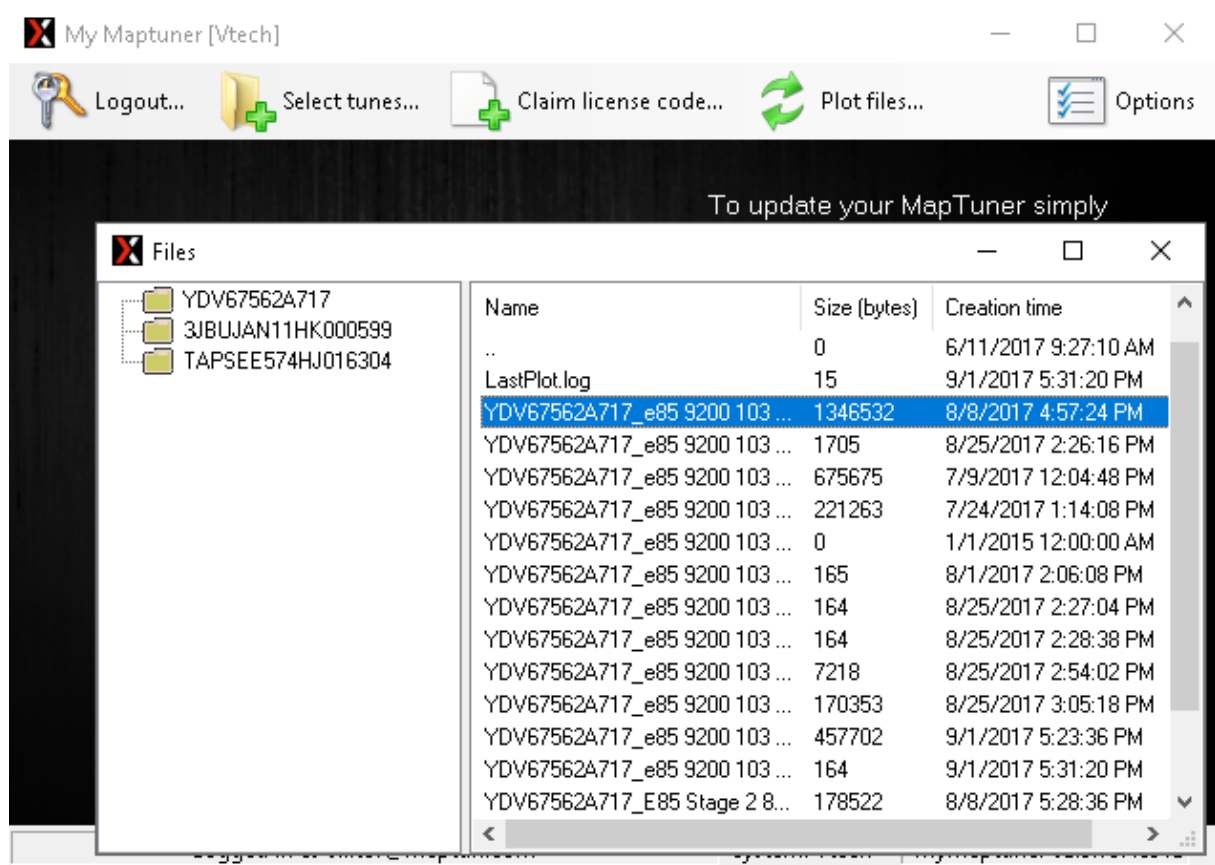
When you finish logging, connect Maptuner X to computer and click on **“Plot Files”** and select unit Maptuner X.



## Step 8

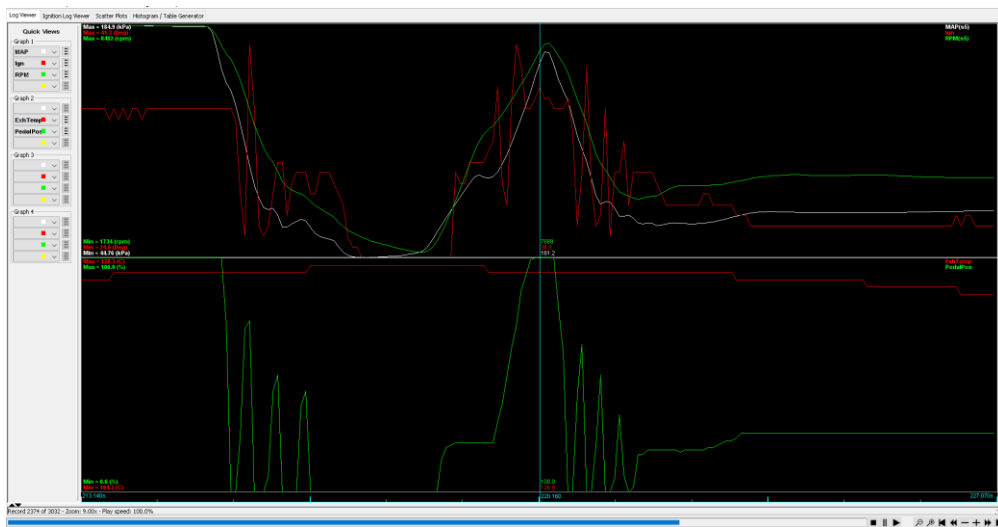
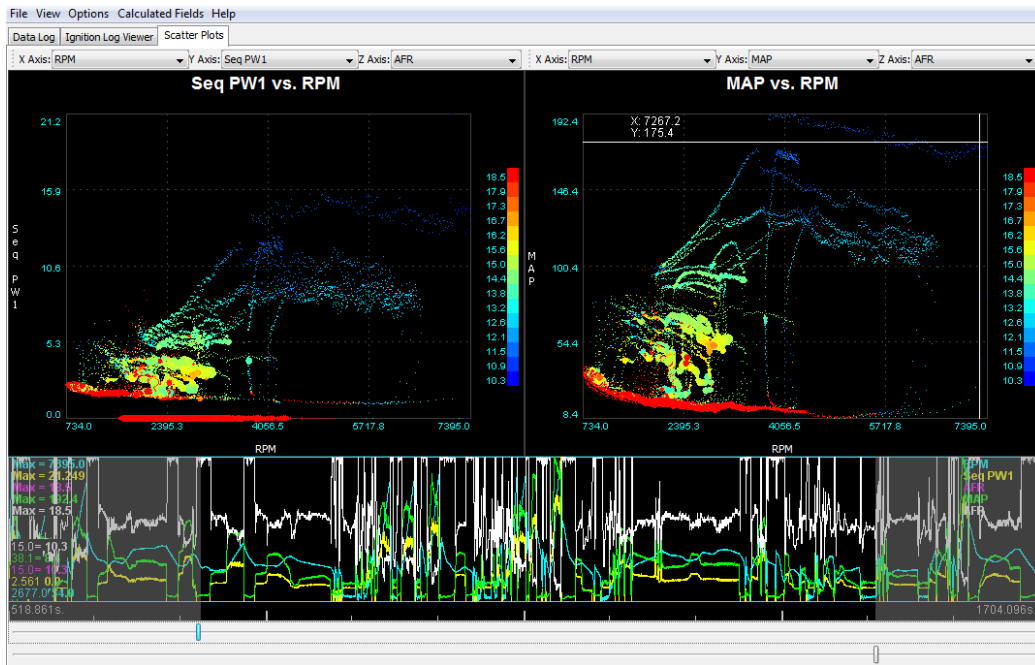
Choose what log file that you want to download.

Right-click for save.



# Step 9

Open file in MegaLogViewer to view your files in different views.



Thank you for choosing us as your tuning supplier.

**Map Tun**  
lowersports  
**VTECHTUNED**

Info@maptun.com

+46 (0) 19 – 23 70 30

